



## Maryland Pastel Society Spring Newsletter

### In This Issue

[From the President's Easel](#)

[Next Meeting Info](#)

[Upcoming Workshops](#)

[Featured Artist](#)

[Member News](#)

[New MPS Members](#)

[Past Events](#)

### MPS Board & Volunteers

**Pres:** Dawn Capron

**VP:** Vacant

**Treas:** Mary Anne  
Warner

**Corr.Sec:** JoEllen  
Murphy

**Rec.Sec:** Barbara  
Steinacker

**Membership:** Maria  
Marino

**Workshops:** Joyce  
Lister

**Web:** Mary Boeh

### Planning Calendar

2014 <sup>12</sup>

~~Apr 19~~: Spring Members'  
Meeting

**May 10:** Summer  
deadline to apply for  
Signature Membership

**Jun 21:** Summer Board  
Meeting

**Jul 19:** Summer  
Members' Meeting

**Aug 9:** Fall deadline to  
apply for Signature  
Membership

March 2014

### From the President's Easel

Crazy is the operative term for describing our weather of late. So many changes in so short a time: 70's last Saturday and snowing as I write this. But March holds the promise of Spring, of plein air painting, of warmth and more light.

Our MPS Board also made some changes. The first change to announce is a loss: Deborah Maklowski is leaving her Board position, but not MPS. Deborah served the MPS on the Board for almost 9 years, 3 of them as president. In anticipation of her Board departure, Deborah and Mary Boeh have been working hand in hand to prepare Mary to take on the tasks associated with the Website, Newsletter, and Membership Directory. MPS is incredibly fortunate to have Mary stepping up to the plate to take on these exacting Board positions.

Another change is a position the Board voted to bring back to the table; that of Exhibition Chair. The tasks associated with running a successful exhibition are complex and infinite: from acquiring the correct venue, to selecting jurors, to creating brochures, and on and on. The decision whether or not to bring back the position was settled by Susan Gleason who willingly said, "yes" when asked to serve. Her organizational talents are being applied as she oversees our mixed media show, "Pastel Unleashed: A Mixed Media Approach." With Linda Light managing the digital images and responses to the artists, Susan will chair this Members Only Show. The exhibition promises to be exciting; always a plus to be at the Strathmore Mansion. Look for the link to the prospectus further down in this newsletter.

*Dawn, MPS President*

### Next Meeting

**RAY EWING** will be with us for our Spring Meeting on Saturday, April 12! What a treat! He will be demonstrating a landscape in pastel with watercolor... a prelude to our mixed media exhibit. A demonstration not to be missed!

**Sep 20:** Fall Board Meeting  
**Oct 18:** Fall Members' Meeting  
**Nov 1:** Winter deadline to apply for Signature Membership  
**Dec 13:** Winter Board Meeting

#### Directions to Glenwood

[Directions to our meetings at the Gary J. Arthur Community Center at Glenwood](#)

The southern Maryland landscape serves as inspiration for many of Raymond Ewing's watercolor and pastel paintings. Ray has been an art instructor, an active juror and guest lecturer in the Washington, D.C. area for over thirty years. He has been featured in solo and group shows throughout the Mid-Atlantic region as well in New England. He has participated in the Department of State "Art in Embassies" program and his work is included in private and corporate collections in the U.S. and abroad. He is represented by the William Ris Gallery in Stone Harbor, New Jersey and the North End Gallery in Leonardtown, Maryland. He is a member of the Mid Atlantic Plein Air Painters Association, the Baltimore Watercolor Society and the Maryland Pastel Society.

Please remember to bring a recent pastel to share with the group, and don't forget something for the food table. As always, there will be food prizes.

See you on Saturday, April 12th at Glenwood!

#### Upcoming Workshops

**The Liz Haywood-Sullivan workshop, "Inside/Outside: The Best of Both," is currently full.** Please contact Joyce Lister at [listerstudio@comcast.net](mailto:listerstudio@comcast.net) if you would like to be placed on the waiting list.

We are very pleased to announce that **Desmond O'Hagan** will be doing a 3-day inside workshop for the MPS, November 6, 7, and 8, 2014, at the Howard County Center for the Arts in Ellicott City. Registration will be MPS members first; more info to come, so stay tuned.

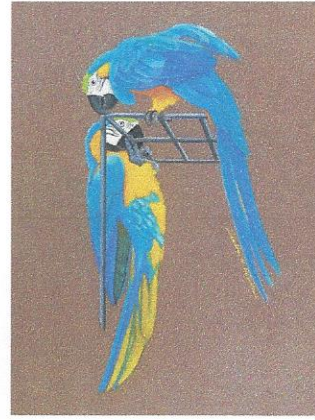
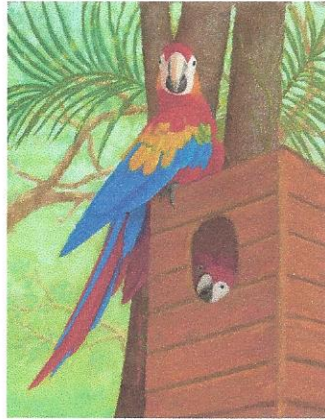
#### Upcoming Exhibitions

We hope you will consider entering the MPS' first ever pastel and mixed media juried exhibition, scheduled to open in November at Strathmore Mansion in Bethesda. Our juror will be Stewart White, a nationally known watercolorist and architectural designer and illustrator. Deadline for entry is July 22; click [HERE](#) to download the prospectus and entry form from our website.

#### ***2014 MPS Members' Directory to be published soon!***

Keep an eye out for an email from the MPS in the next couple of weeks that will contain the link to the 2014 MPS Members' Directory. You will need that link to access and download the file.

**Featured Artist: Sandra Reardon**



I began to paint as a small child, and excelled almost immediately. I was lucky enough to have traveled early and often, and developed a preference for the lush beauty of the tropics. "I love everything tropical—the waters, the lush foliage, brilliantly colored flowers and most importantly, the parrots and birds that inhabit the tropics."

The quality of light in the islands and mountains of the tropics is indescribably luminous from seashore to mountaintop.

The big macaws are my favorite subjects, and as I paint these intelligent creatures, I became immersed in their world. To know them is to love them and that led me to journeys of the mind into their life. The personalities of parrots are mischievous and light hearted. I often find myself smiling the entire time I am painting as I imagine them plotting, planning or involved in adventures. This has led me to write stories of many of my subject paintings.

I paint in pastel and oil. My use of color is heavily influenced by vibrant foliage backlit by sunlight, and the bounce of light reflecting off the luminous feathers of my "Parrots of the World."

The day I first stepped foot on the island of Hawaii many years ago, I began a love affair with parrots. From the first cockatoo that bit a button off my shirt to the giant blue macaw I could almost not carry, I knew this was my world of art. So intrigued was I, that I purchased a baby umbrella cockatoo. That was 22 years ago, and "Tiki" is still with me as I paint him and many of his feathered friends from Polynesia, Hawaii, Australia, South and Central America, Mexico, and the Caribbean. Their raucous good humor and great intelligence makes painting parrots the joy of my life. I try always to paint them in their native wild habitats, many of which are protected, and pristine jungle canopies.

I do most of my work in my Newark, Delaware studio and you can see my work online at [www.SandraReardon.com](http://www.SandraReardon.com)



**Don't forget!** Signature Members may sign up to be a Featured Artist by sending an email to [JoEllen Murphy](mailto:JoEllenMurphy).

### Member News



**Philip Bennet** is having a solo show called "[Kaleidoscope](#)" for up to 20 works on paper, acrylics, and monotypes, at The Old Print Gallery in Georgetown, 1220 31st Street, N.W., that runs from April 11 to June 14. The opening reception is Friday, April 11 from 5 to 8 PM.



**Sandra Askey-Adams** had two pastel paintings juried into shows in PA: "Winter Woods" (framed 20 x 30) and "In the Stillness," framed 29 x 36. The judges reviewed 232 works and a total of 95 works were selected.



**Cathy de Lorimier** will have 5 miniature yoga figure paintings on display and for sale at the Women's Club of Chevy Chase 39th Annual Community Club and Art Sale March 28-30, 2014. The champagne reception is Friday March 28 from 7-9:00, with judge Jack Rasmussen speaking at 8pm. She will also have a painting entitled "Finding My Path" at the Olney Art Association's "Welcome Spring" exhibit, April 6-May 4 at La Galeria at Ranazul. Come out for delicious tapas and champagne! For details, see the Events page on her website, [deLorimierStudio.com](http://deLorimierStudio.com).



**Judith Einstman** had one pastel accepted into the Southeastern Pastel Society's International Exhibition at the Oglethorpe Museum in Atlanta Georgia. Liz Haywood-Sullivan was the juror for the Southeastern Pastel Society's International Exhibition at the Oglethorpe Museum in Atlanta. The exhibit runs from May 15th to June 22nd.



**Susan Ellis** was juried into two New England shows, both sponsored by the Pastel Society of Cape Cod. She was also juried into the Shades of Pastel. She also received an honorable mention award, for "Floating On My Psyche", in a show at the Torpedo Factory in Alexandria, VA. Most recently and quite thrillingly her pastel, "Once More Unto the Breach", was accepted by the IAPS show opening in Boston this May-June.



Eighteen of **Lynn Goldstein's** paintings were displayed at the Arts Club of Washington in Washington, DC in January. In February, Lynn curated and installed her work along with work made by glass artist, David Barnes. The exhibition was entitled "Reflection & Response," and included work that was made by Goldstein, work by Barnes, and art in which the two artists collaborated. "Reflection & Response" was on view at the McGuire/Woods Gallery at the Workhouse Arts Center in Lorton, VA from Feb 12 - Mar 30. Additionally, Goldstein's pastel painting "Dusting" was awarded best-of-show in the Workhouse Arts Center's Collector's Showcase exhibition on Mar1. The judge for the Collector's Showcase was Jack Rasmussen, the curator and director of the American University Museum at the Katzen Center in Washington, DC. The March online issue of "State of the Art" magazine featured Lynn's work as well.



**Cathy Grygiel** is very happy to announce that her pastel "Roadside Treasure" 12 x 16 on Uart was juried into the 24th International Association of Pastel Societies' juried exhibit in the Vose Gallery in Boston.



**Jean Hirons'** painting "The Autumn Marsh" has been accepted to the 37th Art on Paper National Juried Exhibition at the MFA Circle Gallery in Annapolis (Mar 20-Apr 19). Her painting "Colorado Morning" has been accepted to the 24th Juried Exhibition of the IAPS, to be held at Vose Galleries in Boston (May 10-Jun 21). Jean will be giving an all-day, hands-on workshop at the next IAPS convention in June 2015 in Albuquerque. She is also now represented by Color Wheel Gallery 65 in McLean, VA. On Saturday, Apr 12, 2-3pm, Jean will be talking about her book Finding Your Style in Pastel at the Waverly Street Gallery, as part of the Bethesda Literary Festival. Jean teaches at the Capitol Arts Network in Rockville. Her next weekly class will be held Sep 29-Dec 1. She will be giving an informal workshop at CAN in July or August and is planning a plein air workshop in Chambersburg, PA, Sept. 20-21. She is also available for private lessons and critiques. Contact her for details ([jeanhirons48@gmail.com](mailto:jeanhirons48@gmail.com))



**Madeleine Kelly** recently won first prize at DVAL for her pastel, "Contemporary Barn" and honorable mention at the Philadelphia Water Color Society's Members' Show, where she holds a signature membership, for her pastel on a handmade substrate with acrylic under painting, "Before the Thaw." Madeleine also just won first place at the Jenkin's Arboretum Art Show, "Inspired by Nature's Beauty."



**Penny McCreia** is part of the Countryside Artisans' 2014 Spring Studio Tour April 11- 13. Check out



**Eve Miller** has been juried into the following spring shows: Women



**JoEllen Murphy** had three paintings juried into the Montgomery County

[www.countrysideartisans.com](http://www.countrysideartisans.com)

. Her pastel, "Full Moon at Dawn" was selected for the advertising poster for The Hyattstown Mill Arts Project Membership Exhibition, Apr 26 - Jun 8, 2014. Opening reception Saturday, April 26, 5-7pm. More info at

[www.hyattstownmill.org](http://www.hyattstownmill.org)

Painters of the Southeast Third Annual Juried Members' Exhibition; Pastel Society of Colorado Members' Exhibition-Honorable Mention; Pastel National, Wichita, KS; Southeastern Pastel Society 16th International Juried Exhibition and has been named a Member of Excellence; and the Pastel Painters of Maine 15th International Juried Exhibition for "Pastels Only." Included here is the painting "Plum Island Summer" from the Pastel Painters of Maine Exhibition.

Plein Air Painters exhibit at the Hill Center on Capitol Hill in DC. Her painting "Peirce Mill" won a best in show award at the opening reception. The show is up until April 27th. JoEllen will be participating in Paint the Town Chestertown in April, the Frederick County Barnstormers' Paint Out in June and Paint Shenandoah this summer. She also will have several paintings on display and for sale at the Piccola Roma restaurant in downtown Annapolis in early summer. For more details please visit her website:

[www.joellenmurphy.com](http://www.joellenmurphy.com)



**Susan Due Percy** has several events going on this spring. The first is a "Meet the Artist" on Sat. Apr 5, from noon-2pm at the Milkhouse Brewery at Stillpoint Farm where she has 15 works of art hanging, mostly pastels. [www.Milkhousebrewery.com](http://www.Milkhousebrewery.com) April 11 - 13 her studio will be open for the Countryside Artisans Spring Tour. A map and directions and a list of the 15 studios can be found on the website, [www.countrysideartisans.com](http://www.countrysideartisans.com). She will also have work at the Hyattstown Mill Arts Project Membership Exhibition ([www.hyattstownmill.org](http://www.hyattstownmill.org)) which will open on Sat. April 26, 5-7pm. Hope to see you at one of the events!

**Libby Stevens** and Daniel Wise will be in a group show with the Fine Art Professionals of Northern Virginia ([www.fineartvirginia.com](http://www.fineartvirginia.com)) at the Delaplaine Visual Arts Center, Frederick, MD, from Apr 5-27. Reception is Apr 5, 3-5pm. Also, Libby is now teaching a class, Creative Pastels, on Monday mornings, 10-2:30, at The Cooley Gallery, 12 S. King St., Leesburg, VA. Registration & information at [thecooleygallery@gmail.com](mailto:thecooleygallery@gmail.com)

In January, **Dennis Young** was awarded an honorable mention by the jurors for the Delaware Division of the Arts for his submission of paintings - oils and pastels - for the 2014 Fellowship Grant. Also, he is currently showing some of his pastels at The Artists' Gallery in Chestertown and has been juried into Paint Annapolis and Easels in Frederick (for the fourth time in four years). He returned from a plein air competition in Tequesta, FL where, to his great dismay, his best

pastel entry into the competition was accidentally left out of the room for the judging and was therefore not considered for an award. Not a total wash, his oil painting of a French cafe was given the Peoples' Choice Award. Above is a photo of his Quick Draw pastel done on Sunday morning, "On A Clear Day."

### **More Member News!**

**Alice Kelsey's** artwork will be featured in a solo exhibit at the Pennsylvania State University HUB Gallery from May 20-Jul 27, 2014. MPS members are welcome to the reception on Friday, June 6, from 5-7pm. See [www.alicekelsey.com](http://www.alicekelsey.com) for more information.

**Nancy Lovallo** will have a show of her pastels for two months at the Museum of the Shenandoah Valley in Winchester, VA starting in July. On April 27 in the evening there will be a free event at the museum where the artists for the shows in the museum for 2014 will be giving a preview of their work.

**Maria Marino's** painting "Old E.C." was juried into the IAPS 24th Juried Exhibition held at the Vose Galleries in Boston, MA, May 10 - Jun 21, 2014. See the [gallery's website](#) for more information.

Her Painting "Falls of the Hudson" was juried into the National Arts Club's 115th Exhibiting Artist Members' Show, Mar 12 - 30, 2014; Maria attended the awards ceremony on Mar 13 to accept the Art Spirit Foundation Silver Medal for Pastel. In 1906 the National Arts Club celebrated its new headquarters on Gramercy Park with an exhibition of American paintings belonging to member and collector William T. Evans. A successful businessman and renowned collector, Evans, as the Club's Art Committee chair, was instrumental in creating the Artist Life Membership Program and establishing the annual exhibition we now know as the Exhibiting Artist Members Exhibition. See <http://www.nationalartsclub.org/>

Maria's painting "Faraway" was juried into the Salmagundi Club's 130th Annual Member's Exhibition. The show runs Mar 26 - Apr 20, 2014 at 47 5th Ave, NYC. This year, in a rare occurrence, the Club's bravura display of fine art will be installed throughout SCNY's 1854 landmark building. See the [Salmagundi website](#) for information.

Maria's painting "Secret Garden" was juried into the [Maryland Federation of Art's](#) "Art on Paper" 37th Annual National Juried Exhibition, at the MFA Circle Gallery, Annapolis, MD; Mar 20 - Apr 19, 2014.

### **Welcome to New Members**

We're thrilled to welcome new members Diane Ensminger, Brina Pintzuk Suzanne Boom, and Linda Brenegan!

### **Past Events**





On January 25th at our winter meeting we had the privilege of watching a still life demo by signature member **David Lawton**. His setup included purple onions, a copper pot and plate, a ceramic vase, and a knife. We learned how important it is to have a great composition when painting a still life. We also learned that still life painting is the most personal kind of painting because you are able to control the shapes, colors and arrangement.

David works primarily on gessoed 3/16" Masonite board he buys from Lowe's. He buys it in 8 foot sheets and cuts it down to size at his studio. His recipe for the surface is 2/3 cup Liquitex gesso, 1/3 cup distilled water, and 4 tablespoons of Rainbow FFFF pumice (his preferred brand). He uses a 2" paint brush to apply the ground to the surface. He then uses Winsor Newton watercolors to do his underpainting in local colors. After the entire surface is painted, he switches to Nupastels, that he sharpens to a point for details. He stays in what he calls the "middle stage" of painting for quite a long time, until everything looks good. After this stage he switches to his soft pastels for what he refers to as "snap".

His favorite brands are Nupastels for hard and Great American, Schmincke, and Townsends for soft. He always tries to figure out what the painting is about before he starts working. In this painting, he was mostly focusing on the bright highlights on the onions. He also suggested coming up with a title for your work before you even start it, to ensure that you retain the meaning of it as you work.

David is currently the President of the Maryland Portrait Painters. He is represented by McBride Gallery in Annapolis as well as Foxhall Gallery in DC. To see his work: <http://www.lawtonfineart.com>

Maryland Pastel Society | [mdpscontact@gmail.com](mailto:mdpscontact@gmail.com) | <http://www.marylandpastelsociety.com>  
P.O. Box 54  
Riderwood, MD 21139

Copyright © 2014. All Rights Reserved.

 Safe Unsubscribe

Trusted Email from  
**Constant Contact**  
Try it FREE today.

[il.com](#) |