



Maryland Pastel Society Summer Newsletter

In This Issue

[Upcoming Events](#)

[From the President's Easel](#)

[Next Meeting](#)

[Featured Artist](#)

[Member News](#)

[Membership News](#)

[Past Events - Spring Meeting](#)

MPS Board and Volunteers

President: Mary Boeh

Vice President: Kim
Stone

Treasurer: Mary Anne
Warner

Recording

Secretary: Lyn Laviana

Corresponding

Secretary: Joyce Turk

Membership

Chair: Kathleen Risk

Workshop

Chair: Joyce Lister

Co-Exhibition Chairs:

Susan Gleason, Laurie
Basham

Web: Pam Sheary

Planning Calendar

June 12-Aug

13: Signature Members
Exhibition, Columbia, MD

July 14: Summer meeting
at Gary J. Arthur

Community Center,
Glenwood, MD

Sept 15: MPS Board
Meeting

Oct 5-7: 3-day Nancie
King Mertz workshop,

April 2018

From the President's Easel

Summer in the mid-Atlantic has taken hold. Along with the humidity comes that wonderful atmosphere, hazy, sultry; challenging to paint. Whether you are in your studio or sitting outside on a bench quickly sketching out those brilliant oranges and hot pink-reds of sunset, summer is a wonderful time to paint! It's also a great time to try something new. At our summer meeting, you will learn about Colorfin PanPastels. PanPastel Colors are professional artists' quality soft pastel colors packed in a unique pan format. Based in Kutztown, Pennsylvania, Colorfin will join us on Saturday, July 14 to introduce the product and demonstrate PanPastel painting techniques. If you have never tried them, this will be a fun way to test out PanPastels.

Have you had a chance to visit our *Pastel Passion* exhibition at the Bernice Kish Gallery at Slayton House, in Columbia, Maryland? It runs through August 11 and is a wonderful opportunity to see works by our Signature Members. You won't want to miss it!

This Fall, our society will elect a new slate of officers. If you have an interest in serving as an officer, a committee chair or co-chair, please contact us at the earliest opportunity. Serving on the board is an excellent way to give back to the artist community. You will gain insights into organizing exhibitions, workshops, and other art-minded events. These are skills that will make you a stronger artist. Contact us. We'd be delighted to talk with you about how you can become involved.

Happy painting!
Mary

Next Meeting: Summer

Our Summer General Meeting will be held Saturday, July 14, from noon to 4 pm at the Gary J. Arthur Community Center in Glenwood, Maryland.

As you read in Mary's letter, at our summer meeting, you will learn about Colorfin PanPastels. Pan pastels can be used alone or combined with traditional stick pastels on most surfaces, from smooth to high tooth. They are ideal for creating an underpainting or producing broad strokes by using a large sponge or angel wedge to apply color. Pan pastels are very versatile

Allenberry Resort, Boiling Springs, PA

Oct 18-19: 2-day Tony Allain workshop before Fall meeting

Oct 20: Fall meeting at Gary J. Arthur

Community Center, Glenwood, MD

Dec 15: MPS Board Meeting

Directions to Glenwood

Directions to our meetings at the Gary J. Arthur Community Center at Glenwood

and can also be used with non-pastel mediums such as watercolor to create interesting effects. Advantages? They generate very low levels of dust and they are very forgiving. Artist quality pan pastels are lightfast, fully erasable, and are compatible with fixatives. Though not essential, fixative can be used to protect the painting.

We are fortunate to have artist and educator Gail Piazza on hand to give us a talk and demonstration on the product. If you have never tried them but have always been curious, this will be a great opportunity to learn more about PanPastels. To see Gail's work go to gailpiazza.com. Visit www.panpastel.com to learn more about the product.

Featured Artist: Andree Tullier



"Kate" by Andree Tullier



"The Composer" by Andree Tullier

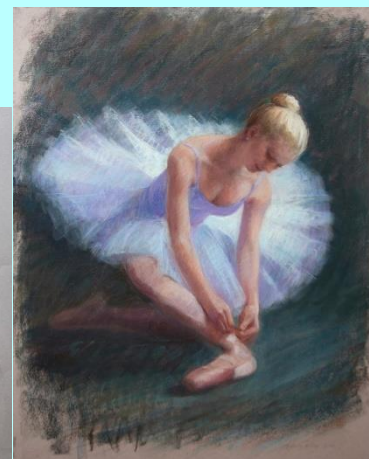
Andrée Tullier was born in Lafayette, Louisiana and moved to Annapolis, Maryland at a young age. After graduating with a B.A. in Studio Art from the University of Maryland, Andrée received her Art Education degree from Bowie State University. She taught high school art for a short time and then embarked on a graphic design career.



"Gabriel" by Andree Tullier
Andree Tullier



"Sophia" by Andree Tullier



"Preparing for Rehearsal" by

In high school Andrée was drawn to Impressionism and became passionate about the color of light in nature, which continues to both amaze and challenge her. Returning to her passion in 2001 she embarked on a fine art career. Andrée concentrated her studies on color perception and drawing skills through still life, landscape, portraiture and figure work. Her work in sculpture has helped her to understand form in space and has elevated her skills and abilities to paint the portrait and figure in a setting.

Andrée teaches Drawing and Painting in her studio, Maryland Hall for the Creative Arts marylandhall.org and at Anne Arundel Community College. While she enjoys painting en plein air, her beautiful north light studio provides the ideal setting for her indoor work and commissioned portraits. You can see more of Andrée's work at andreetullier.com.



"For Ella" by Andrée Tullier

Signature Members may sign up to be a Featured Artist by sending an email to mpsnews18@gmail.com. You will need to provide a write-up and five to seven images upon acceptance.

Also, Signature Members, if you would like to update your images on the MPS web page gallery, please contact Joyce Lister by email listerstudio@comcast.net.

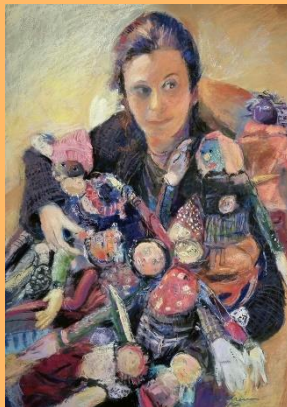
Member News

Rebecca Yates Shorb received an award of merit in the Pastel Society of Maine Spring Members Show, 3/13 - 5/1, in Damariscotta, ME. She was also awarded the Distinguished Alumni Award by Catoctin High School in Thurmont, MD in the category of former staff. The criteria included her art accomplishments, volunteerism and passion to encourage up-and-coming artists.

Eve Miller's paintings were juried into various exhibitions: Pastel Society of Southeast Texas - Second Place, Nocturne Invitational Cecil Byrne Gallery Charleston, SC, Pastel Society of Colorado 14th Annual Mile High National Pastel Exhibition, Pastel Painters Society of Cape Cod "For Pastels Only" - Award
Pratiques des Arts #47 Special Edition Pastels "Vision of Landscape" An interview of my process. evemillerfineart.com



"Pond Scum and Cat Tails"
by Eve Miller



"Gina" by Michael Gaudreau

Michael

Gaudreau's pastel

portrait of artist Gina Pierleoni won an award in the "Works On Paper" show at the MfA Circle Gallery in Annapolis in March. It was a nationally juried show curated by Mary Lee Corlett of the National Gallery and out of 700 entries two of his paintings were juried in. Gina's portrait as well as two other portraits were recently accepted into the North East Pastel Society's upcoming show this month.

Donna

Finley's painting "Breaking

Through Stormclouds" has been accepted into the "Reflections: Natural and Imagined" exhibit at the Academy Art Museum, Easton, MD, 7/21 - 8/19. Opening reception 7/27, 5:30 - 7. Donna will be exhibiting at the River Arts Gallery in Chestertown, MD in the show "Faces and Spaces on the Eastern Shore," 7/5 - 7/29. Opening reception 7/6, 5 - 8. She will also participate in the St. Michaels Art League exhibit at the A.M. Gravely Gallery in St. Michaels, MD. Opening reception 8/11, 5 - 7. On Labor Day weekend, 9/1 and 9/2, She will be showing a number of paintings during the St. Michaels Art League's annual "Under the Tent" Art Show and Sale on Talbot Street, St. Michaels, MD. Hours: 10 - 5, Sat. and 12:30 - 5pm, Sun.



"Breaking Through Storm Clouds" by Donna Finley

Dolores Andrew will teach a 3-day workshop for the Rehoboth Art League on Pastel Landscape in Plein air. The dates are 7/16-18, 9:30 a.m. - 12:30 p.m. each day. For information call 302-227-8408, or go to rehobothartleague.org.



"River Dance" by Gayle Mangan Kassal

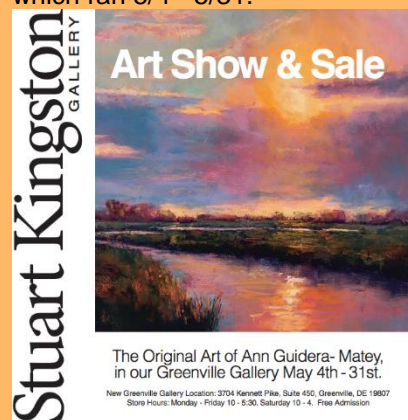
Gayle Mangan Kassal's exhibited 8 oversized pastel paintings in "Untamed Garden" at Jo Fleming Contemporary Art, Annapolis, MD, May and June. Her 39"x 89" pastel "River Dance" is also simultaneously being displayed as an 8' x 12' print in BWI Concourse D Art Gallery and is now part of their permanent collection. She also just completed an Artist in Residence at Benfield Elementary School where she created a 15' x 30' mural in acrylic with 352 third thru fifth graders entitled "Soaring to Success". Visit her website at GMKfineArt.com.

Deborah Maklowski's "Red Barn at Massey" was awarded 2nd place by judge Abigail McBride at the Mid-Atlantic Plein Air Painters' Association's "Small Works" show, featured in June at the Artists' Emporium Gallery in Havre de Grace, MD.



"Red Barn at Masey" by Deborah Maklowski

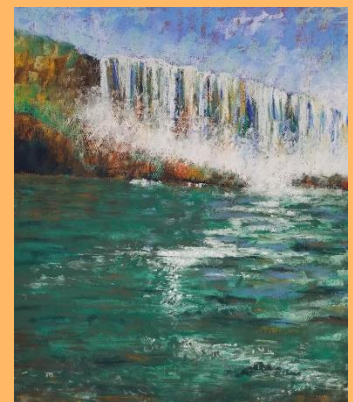
Ann Guidera-Matey had an exhibition at Stuart Kingston Gallery in Greenville, DE which ran 5/4 - 5/31.



Ad for Ann Guidera-Matey's show.

Lieta Gerson is exhibiting paintings in "A Full Range of Color" at Thomas Farm Community Ctr., 700 Falls Grove Dr., Rockville, MD, 4/19 - 7/18. Open hours: Mon. - Fri., 6 a.m. - 9:30 p.m.; Sat., 8:30 a.m. - 9:30 p.m.; Sun., 10 a.m. - 6 p.m.

Debi Peters' pastel won the 2017 Rottler Award



Winning Pastel by Debi Peters

for Excellence in the Visual Arts for the Non-professional Category for my soft pastel work. The exhibition was up until Saturday 6/23 at the York Art Association in York, PA. The Rottler Award Selection is held every other year (odd years) and the Rottler Award Recipients Group Exhibition is in the even years. Rottler award recipients will not be eligible to receive the award again. Three awards are given in the Professional category, and two in the Non-Professional category.

Jean Hiron will be giving two two-day workshops in her new sunlit studio this coming August on Mondays from 10 - 4. The workshops focus on drawing for landscape painters. The first sessions will be devoted to drawing trees, clouds and buildings in the landscape. The second sessions will focus on value and doing different types of studies. Session 1 is Mondays 8/6 and 8/13; Session 2 is Mondays 8/20 and 8/27. Each day is 10 - 4. The cost is \$150 for 2 full days. To enroll: email jeanhiron48@gmail.com. Jean will begin her regular 10-week fall classes in late Sept. She will teach 10 - 1. on Mondays, Wednesdays, and some Saturdays. The focus of the classes will be on composition and mood. All classes are at Artists and Makers Studios, 12276 Wilkins Ave., Rockville, MD 20852. For more information, visit jeanhiron.com.

Jack Pardue is teaching classes for Summer 2018 at the [Yellow Barn Studio](http://YellowBarnStudio.com): Drawing Techniques With Varied Mediums, \$150, August 27 - 31, 1 - 3:30. Learn how to be expressive with your line quality using Conte' and other drawing mediums. We will draw a simple still life. How to Use a Photo and Not Abuse a Photo, \$150, August 27 - 31, 4 - 6:30 pm. Learn how to see more than one painting image in one photo. Work in your favorite medium. All skill levels are welcome for all workshops! For more information go to parduestudio@gmail.com.

Membership Update

Maryland Pastel Society is very happy to welcome seven new members in April and May!

Carla Alamia

Julia Bezgacheva

David Camorali

Paula Eiblum

Susan Hodge

Deborah Mahnken

Hsiang-ling Yao

Past Events - Spring General Meeting 4/21/18

Betsy Kellum - "The Making of a Still Life"



Betsy Kellum talks about the importance of choosing the right objects in a still life.

MPS enjoyed the presentation by Betsy Kellum and her demonstration on "The Making of a Still Life" which included a power point introduction at our Spring meeting. She describes her work as classical and contemporary realism. Her powerpoint showed us the varied subject matter and depth of expression in a cross section of her paintings.

Betsy has a four-point painting procedure:

Sequence 1. DRAWING

Drawing is paramount to the success of a painting. Accuracy is the key but she keeps it light and loose.

Sequence 2. UNDERPAINTING

Betsy applies oil and turpentine very thinly to create a stained effect. She begins with three to five values, yellow being the lightest in chroma to red/purple, the darkest.

Sequence 3. PASTEL APPLICATION

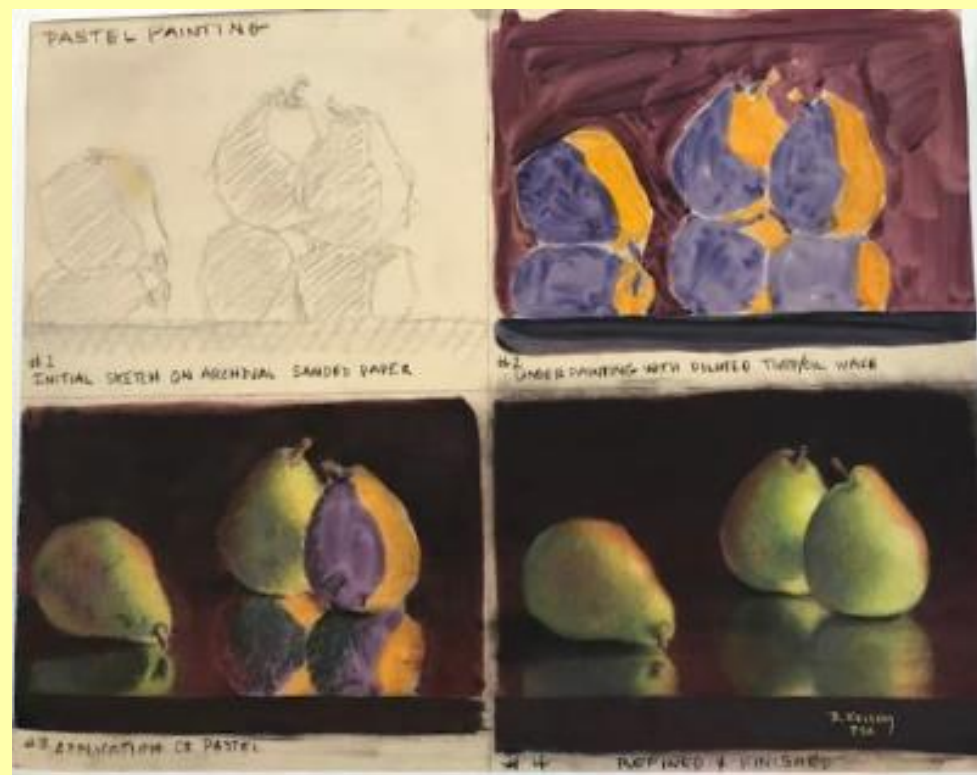
Betsy works from top to bottom, and from lights to mid-tones to darks. She stays true to the values of her underpainting.

Sequence 4. FINISHED PAINTING

Betsy likes to finish her paintings with pastel pencil, glazing the colors together and softening edges. She stresses how important your signature is and how the placement needs to be well thought-out.

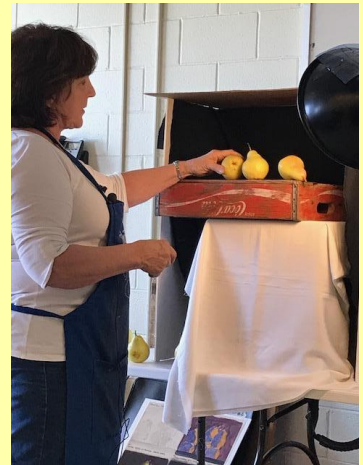


"Welcome to Washington" is an example of Betsy's use of marionettes and antique objects as subjects in her paintings to create a point of view or story.



She provided examples of her four-point approach.

Betsy's still life demo demonstrated similarly the set up she has in her studio. She uses a three-sided stage created from gator board with slats to accommodate wooden bars from which to hang marionettes and puppets. She has complete control over the lighting. Her subject was three pears which she spent a good amount of time to position just the way she wanted them. They sat atop a very interesting antique CocaCola box which she positioned upside down for interest. The background was very dark and the box sat upon a contrasting white sheet draped over a box. Betsy layers her whites on top of the yellows of her underpainting. She works slightly smaller than life-size. Finally, a beautiful large glass marble was introduced.



The final painting was evocative and playful, like so much of Betsy's work. Her colors were harmonious her composition was masterful. To learn more about Betsy Kellum and her work visit her website at betsykellum.com.

Past Events - Margaret Dyer Workshop 5/4 - 5/6



Margaret Dyer at the easel (left) and her finished demo of the first day's model (right).

Maryland Pastel Society's workshop with **Margaret Dyer**, May 4-6 in Rockville, MD was as enjoyable as it was informative. We soon found ourselves at ease with Margaret's delightful commentary and easy-going style. In three days we worked with two nude models and one costumed. She handed out her seven-step approach to finding the best composition and most accurate dimensions for figure drawing. Step 1: Draw. This first step is painstaking but critical to the accuracy of the finished piece. She works lightly with charcoal to get an overall gestural shape in the format. Then, with head height established, she uses that measurement to find the rest of the figure standing in the same spot with arm straight out holding the measuring stick vertically and horizontally and counting off each aspect of the whole until the drawing is correct. Step 2: Shadows/Light. Margaret constantly squints to see the dark masses including any in the background. She lightly draws the shapes and masses them in with a color darker than the paper, but not overwhelmingly dark. Step 3: Black. Yes, black, or her darkest pastel. Again, squinting, she indicates the very darkest spots. All other darks will be lighter than these. Step 4: Darks. Squinting, Margaret begins to adjust the shadows and "build" the darks using warms and cools. It's very important to stay in the same value range



while adding color. According to Margaret, "There is no such thing as a wrong color, only a wrong value." Step 5: Lights. Next she builds her lights until they are "saturated and beautiful" again using cools on warms and then cooling down areas, always within the correct value. "If it disappears when you squint, you can use it," she instructs. Step 6: Middle Tones. While once

again squinting, she continues to change temperature in areas and find the values between the darker and lighter shapes. Margaret stresses really taking time at this stage to see. Step 7: "Punctuation." Her final marks are to refine middle tone transitions, create lost and found edges and notice reflective light. This is when to adjust temperature and make comparisons to the subject.

Margaret breaks everything up into just four values: dark, middle tone, light and black. She counsels not to put a pastel back in the box until you have used it in other places on the composition to create harmony; also, the lighter your touch, the more color you can layer. To see Margaret Dyer's fabulous figure paintings in pastel and



oil go to margaretdyer.com.



Past Events - Exhibits

MPS Members Only Juried Exhibition "Compelling Colors"

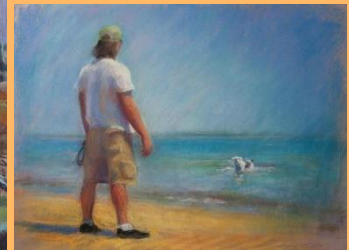
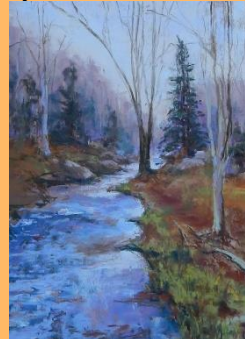
was held 5/4 - 5/28 at the A.M. Gravely Gallery in St. Michaels, MD. The judge/juror was John Morrell. The opening reception was 5/12, 5 pm - 7 pm. Here are the winners of this year's event.



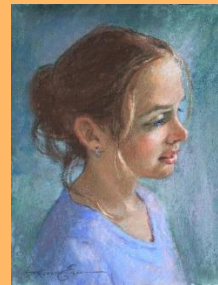
(Clockwise above from left) First Place - "Colors of Summer" by Katie Cassidy; Second Place - "At the Shore" by Lyn Laviana; Third Place - "Two of a Kind" by Monna Kauppinen.



(Clockwise below from left) Five Merit Awards went to "Covered and Waiting" by Greg Johannesen, "Persephone Waits" by Mary Boeh, "Beach Break" by Andree Tullier, "Brae" by Laura Era, and "The Beach House" by Rebecca Denny.



The Pastel Society of America Award went to "The Curious One" by Susan Gleason (below).



The Connecticut Pastel Society Award went to "Leola Glow" by Lisa Neil (below).



MPS Signature Members Exhibition, "Pastel Passion" began 6/14 with a reception on 6/24, and will be available for viewing through 8/11 at Bernice Kish Gallery at Slayton House, 10400 Cross Fox Lane, Columbia, MD. Gallery Hours: Mon. - Thurs. 9 a.m. - 9 p.m., Fri. 9 a.m. - 5 p.m., Sat. a.m. - 2 p.m.



One of two rooms with great lighting for our Signature Members Exhibit



There was a common space for camaraderie complete with a live guitarist at the reception.



Patrons and visitors enjoy the exhibit.

A Word About Framing

When submitting a painting to be hung in an exhibit, keep in mind that the frame is as intrinsic to its viewing as the piece itself. Take care when attaching the hanging wire in the back to assure there are no protruding nails and the end result is properly positioned. Make sure the size is correct and the artwork fits snugly, eliminating any visible gaps. If using a mat, be aware to cover edges not intended to be seen. Finally, if the artwork has been hanging on a wall prior to the exhibit, please remember to dust the frame and wipe the glass.

MPS reserves the right to withhold a painting from an exhibit that is not framed correctly.

Upcoming Workshops and Events

Nancie King Mertz Plein Air Workshop (waiting list only)
October 5 - 7

Allenberry Resort and Playhouse, Boiling Springs, PA

Nancie will share her methods of capturing images quickly in pastel. This will be a plein air workshop, weather permitting, in the beautiful Cumberland Valley, next to the Yellow Breeches Creek, famous for its trout fishing and scenic views.

Videos of her technique are soon to be released by Streamline Publishing and her Richeson Pastel Sets under "Nancie King Mertz" can be purchased on Amazon. Learn more about Nancie and her work at nanciekingmertz.com.

Tony Allain Workshop (waiting list only)

October 18 - 19

Artists and Makers Studio 2, Rockville, MD

This 2-day indoor "Chasing the Light" pastel workshop with Tony Allain is for those who wish to speed up and become less tight in their work. Students will learn how to simplify their approach and experiment ways to introduce color and light into their work - to achieve exciting, impressionistic paintings. Tony lives in Cornwall and travels extensively teaching workshops throughout the US and Europe. He is a prolific painter and much sought after workshop instructor, generous with information and individual help. Tony is a Signature Member of the Pastel Society of America, a Master's Circle Member of IAPS, as well as a member of the Pastel Society UK, and a Master of The Pastel Artists of New Zealand. Tony will hold a two-day workshop before he enlightens us with a demonstration at our Fall general meeting, Oct. 20. Visit Tony's work at www.tonyallainfineart.com.

Lisa Mitchell Landscape Workshop

September 21 - 23

Rhoneymeade Sculpture Garden and Arboretum, State College, PA

Lisa will teach her three day workshop starting with morning demos to be followed by plein air painting sessions taking advantage of the inspiring and abundant scenes at Rhoneymeade. Pastels will be the focus but other media are welcome as Lisa is experienced in both oil and pastel painting. More information and registration can be found on the Central Pennsylvania Pastel Society's (CPPS) website: <http://www.centralpapastel.com/single-post/Lisa-Mitchell-2018-Workshop>

The

COLOR Columbia Plein Air Paint Out

is back by popular demand! 2018 marks the second year of this event. Saturday, 9/8, 8:30 - 5. In celebration of Columbia's 50th Birthday, approximately 50 artists will ditch their studios for the day to paint al fresco around Lake Kittamaquidi and Wilde Lake capturing wildlife, nature and the serene views around two of Columbia's signature lakes. Artists can arrive at sunrise and leave at sundown. Visit [Color Columbia: Plein Air Paint Out](#) for more details.

Monadnock Area Artist's Association

"Realistic Pet Portraits in Pastel" with Lisa Ober

September 15 - 16, 10:00 - 4:30

Stone Arch Village Community Room, 835 Court Street, Keene, NH

Artist Lisa Ober, PSA, will be your instructor in this hands-on workshop sharing her experience creating life-like pastel pet portraits. Lisa's step-by-step approach to teaching pastel pet portraiture insures that when this workshop is complete you will know how to develop a realistic pet portrait from the first sketch through signing the finished painting. For more information contact Carol Corliss at pastels@tpdi.biz or 603-363-4205. Also check out www.monadnockareaartists.org to learn more about the Association.

Upcoming Exhibit Opportunities

Philadelphia Water Color Society 118th Anniversary International Exhibition of Works on Paper. Oct 14 - Nov 24, 2018 at the Wayne Art Center, Wayne, Pa. Juror of Selection: Alan Wylie, Judge of Awards: Alvaro Castagnet. Workshop Alvaro Castagnet. Over \$ 8000.00 in awards, including \$1500.00 Best in Show. Media to include watercolor, acrylic, pastel, gouache, pen & ink, graphite, colored pencil and hand pulled prints. Online entry. Prospectus, submission information and workshop info at www.pwcsociety.org.

Susan Due Percy shared: The **Washington Women's Arts Center** (WWAC), located at 1821 Q Street NW Washington, D.C. was created in 1975 as a non-profit organization to provide professional support and opportunities for women in the arts. Its present exhibition "Latitude" features the art of former WWAC members. Curated by Francoise Yohalem, it will showcase 90+ works produced between the years 1975-1987, some of which are iconic of that time. The show is at the Alper Initiative for Washington Art at the American University Museum. Recent works by WWAC artists will be featured in a slideshow and member interviews will appear in an accompanying documentary, "Voices from the Washington Women's Arts Center". The exhibit runs from 6/16 - 8/12.

MPS Needs You

Get Involved!

To keep our organization healthy and happy we all need to participate. Everything from bringing snacks to heading up committees is an opportunity to get involved. Are you interested in serving on the board? Please contact a board member if you are willing to contribute your time and talents.

Parting Thought

"Art is not what you see, but what you make others see"

--Edgar Degas

Maryland Pastel Society | mdpastels@gmail.com | <http://www.marylandpastelsociety.com>
P.O. Box 54
Riderwood, MD 21139